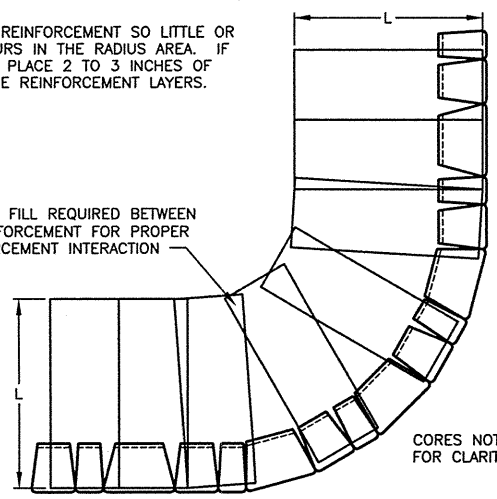


← PRINCIPLE REINFORCEMENT DIRECTION

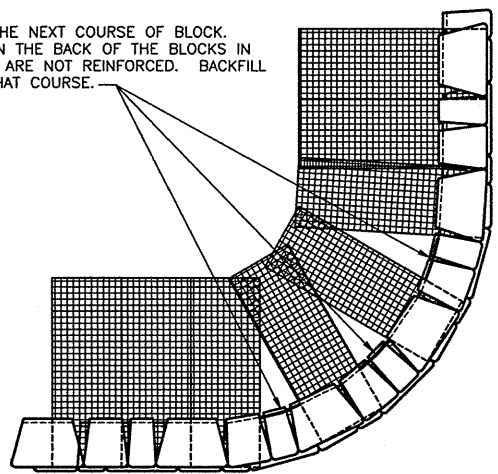
STEP 1 - PLACE REINFORCEMENT SO LITTLE OR NO OVERLAP OCCURS IN THE RADIUS AREA. IF OVERLAP OCCURS, PLACE 2 TO 3 INCHES OF SAND BETWEEN THE REINFORCEMENT LAYERS.

2" TO 3" OF SOIL FILL REQUIRED BETWEEN OVERLAPPED REINFORCEMENT FOR PROPER SOIL AND REINFORCEMENT INTERACTION

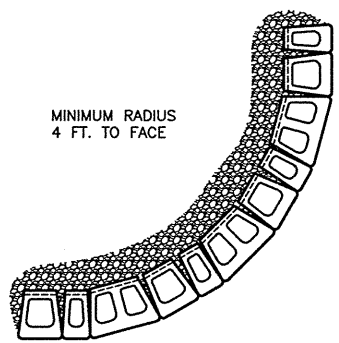
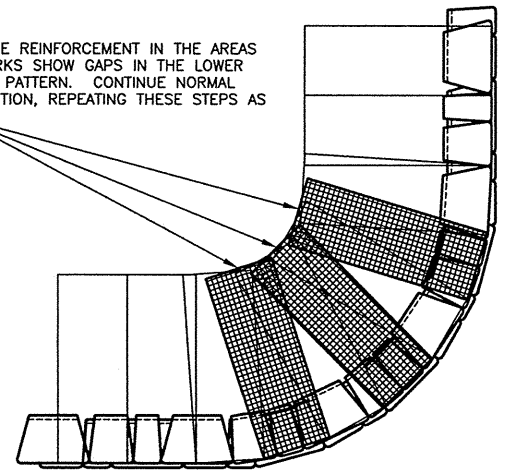


CORES NOT SHOWN FOR CLARITY

STEP 2 - LAY THE NEXT COURSE OF BLOCK. MAKE A MARK ON THE BACK OF THE BLOCKS IN THE AREAS THAT ARE NOT REINFORCED. BACKFILL AND COMPACT THAT COURSE.



STEP 3 - PLACE REINFORCEMENT IN THE AREAS WHERE THE MARKS SHOW GAPS IN THE LOWER REINFORCEMENT PATTERN. CONTINUE NORMAL WALL CONSTRUCTION, REPEATING THESE STEPS AS NEEDED.



MINIMUM RADIUS
4 FT. TO FACE

**ANCHOR STONE CUT™ SERIES DIAMOND PRO™
X
WX (NOT TO SCALE)**

Anchor
RETAINING WALL SYSTEMS
Preferred Worldwide For Selection and Quality

These graphical representations are intended for preliminary design purposes only, and are not to be used for construction without the signature of a registered professional engineer.

All information herein © 2006 Anchor Wall Systems

Drawn By: AWS
Date: 1/26/06
Scale: NTS

Drawing Title: **STONE CUT™ SERIES DIAMOND PRO™
OUTSIDE CURVE DETAILS**
Project Information: ANCHOR RETAINING WALL SYSTEMS
TYPICAL WALL DETAILS