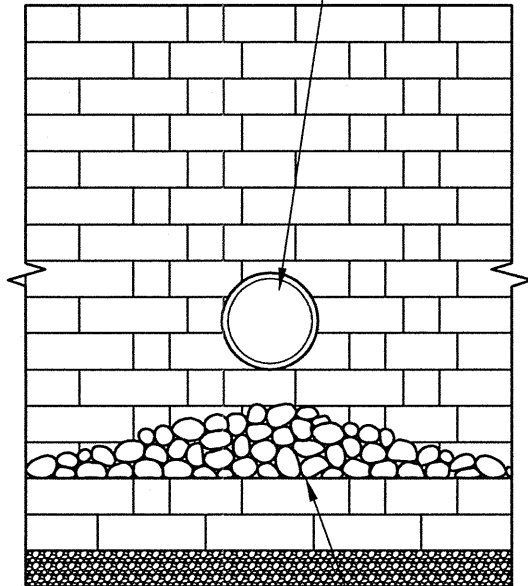
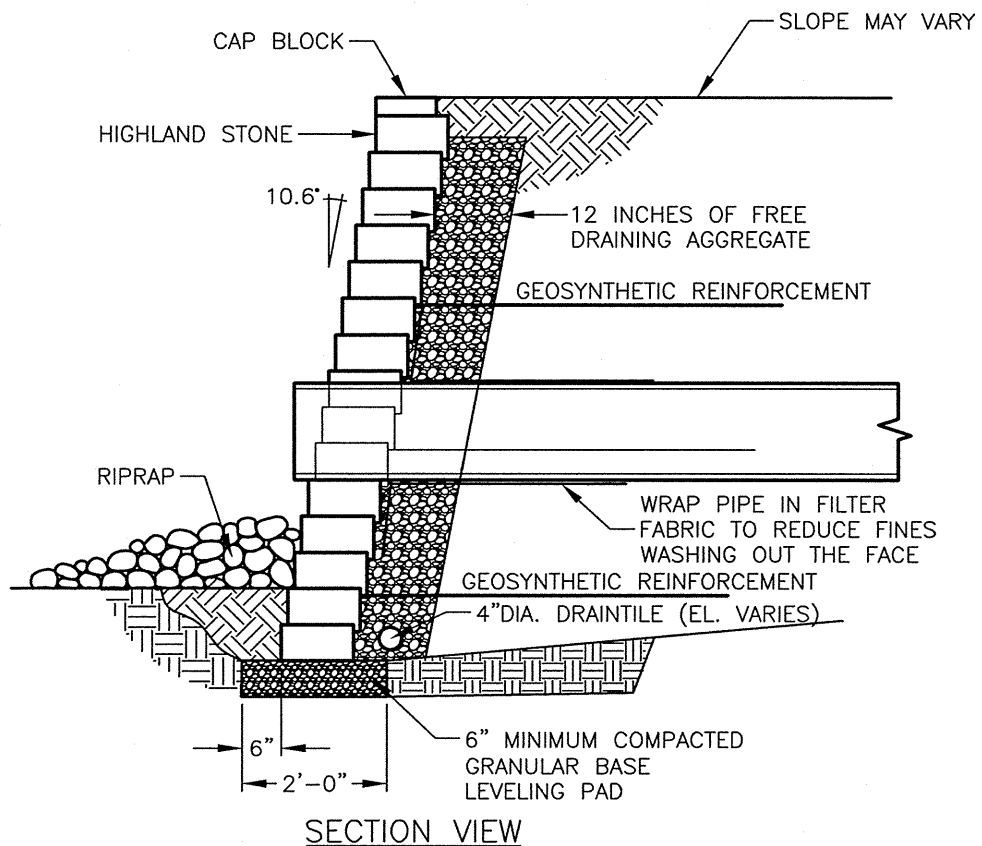


HAND CUT BLOCK UNITS
TO WITHIN 1/2" OF PIPE



SCOUR PROTECTION
AS REQUIRED. USE
RIPRAP OR PRECAST
SLAB IN OUTLET AREA
(DESIGNED BY OTHERS)

FACE VIEW



SECTION VIEW

**ANCHOR HIGHLAND STONE™
PIPE OUTLET THROUGH WALL - LOW FLOW**
WX (NOT TO SCALE)



These graphical representations are intended for preliminary design purposes only, and are not to be used for construction without the signature of a registered professional engineer.

All information herein © 2005 Anchor Wall Systems

Drawn By: AWS
Date: 5/22/05
Scale: NTS

Drawing Title: ANCHOR HIGHLAND STONE
LOW FLOW PIPE THROUGH WALL
Project Information: ANCHOR RETAINING WALL SYSTEMS
TYPICAL WALL DETAILS