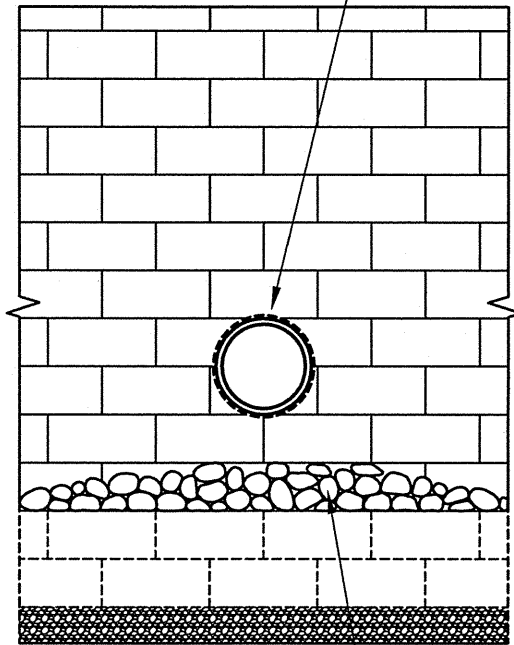
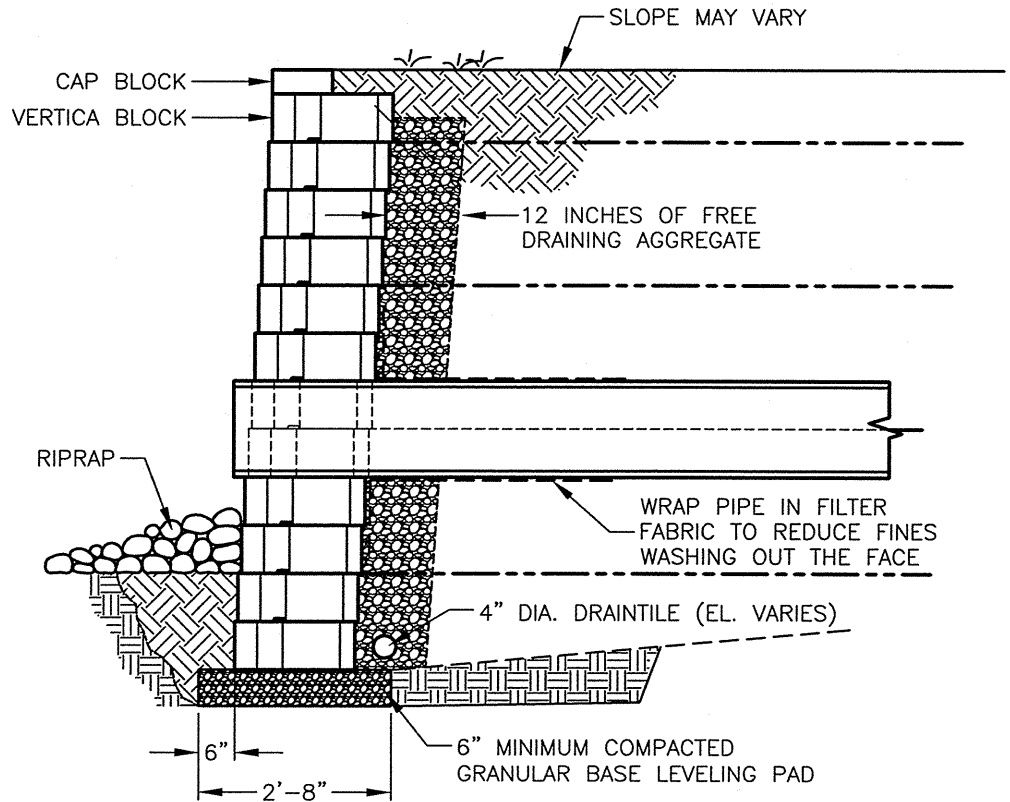


HAND CUT BLOCK UNITS
TO WITHIN 1/2" OF PIPE

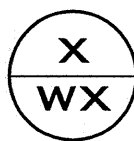


SCOUR PROTECTION
AS REQUIRED. USE
RIPRAP OR PRECAST
SLAB IN OUTLET AREA
(DESIGNED BY OTHERS)

FACE VIEW



SECTION VIEW



**ANCHOR VERTICA PRO[®]
THROUGH WALL PIPE OUTLET - LOW FLOW**

(SCALE: 3/8" = 1'-0")



RETAINING WALL SYSTEMS
Preferred Worldwide For Selection and Quality

These graphical representations are intended for preliminary design purposes only, and are not to be used for construction without the signature of a registered professional engineer.

All information herein © 2005 Anchor Wall Systems

Drawn By:

AWS

Date:

4/29/2005

Scale:

3/8" = 1'-0"

Drawing Title:

**ANCHOR VERTICA PRO
LOW FLOW PIPE THRU WALL**

Project Information:

ANCHOR RETAINING WALL SYSTEMS
TYPICAL WALL DETAILS