

DRAINAGE WEEPS FOR MONOLITHIC CURB AND GUTTER ON PC CONCRETE PAVEMENT (WITH SIDEWALK)

ADJACENT SIDEWALK
CONCRETE CURB AND GUTTER

EXPANSION JOINT

CONCRETE CURB AND GUTTER
PER LOCAL STANDARDS

1/2" O.D. DRAINAGE WEEP
(UPC PIPE) @ 36" C/C
CONNECT TO DRAIN STRUCTURE

GEOTEXTILE TURNED UP AT SIDES
AND TO COVER END OF WEEPS

PAVESTONE CONCRETE PAVER
2 3/8" (60MM) MINIMUM THICKNESS

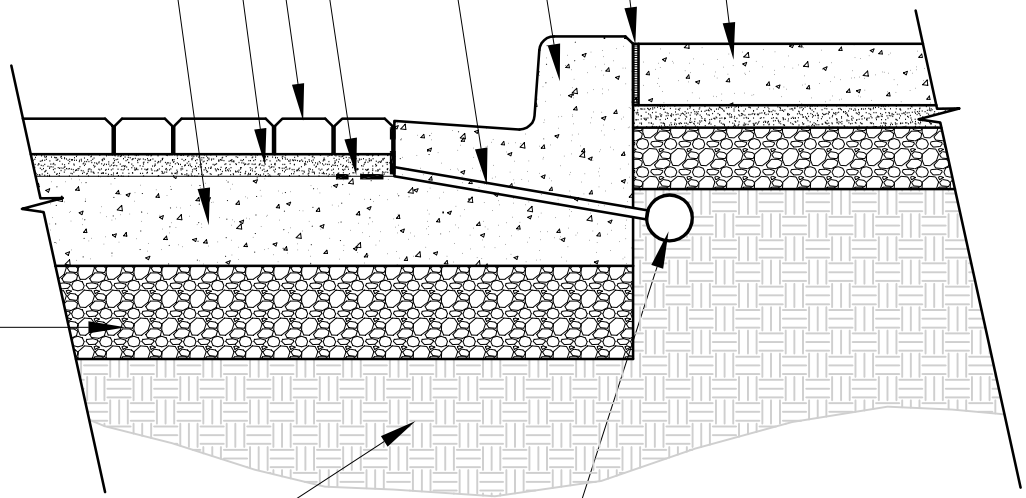
BEDDING SAND
APPROXIMATELY 1" TO 1 1/2" (25-40MM)

PC CONCRETE PAVEMENT

SUB-BASE

COMPACTED SOIL SUBGRADE

3" O.D. PVC PIPE/ CONNECT TO STORM SYSTEM



file: weeps-mono-crb-gut.dwg
SCALE: 1"=1'-0"

NOTE: DETAIL DESIGN SHALL BE APPROVED BY A LICENSED ARCHITECT, ENGINEER OR LANDSCAPE ARCHITECT FAMILIAR WITH SITE CONDITIONS AND LOCAL BUILDING CODES.